

PREPRUFE® TIEBACK COVER

Technical data sheet

Description

The Preprufe® Tieback Cover is a specially designed, two-part cover used to maintain waterproofing integrity at soil retention tieback heads. The Preprufe Tieback Cover consists of a base and cover, and is assembled on site to provide a simple and quick waterproofing detailing aid used with the Preprufe system. A prefabricated, rigid ABS plastic base provides the strength and durability needed to withstand the pressure created by concrete placement, and the prefabricated Preprufe membrane cover ensures continuity of the advanced bond technology for the Preprufe System.

Use

The Preprufe Tieback Cover can be installed over cable and rod type tieback heads. The base is mechanically fastened to the soil retention system and the cover is positioned

over the base and integrated to the field membrane with Preprufe Tape providing a continuous Preprufe system for these difficult to detail areas.

Installation

- Install Preprufe Membrane within 2 in. (50 mm) of tieback as per standard installation instructions.
- Center the base over tieback and secure base to soil retention system using appropriate fasteners. Fasteners should have a low profile head.
- Apply Preprufe Tape centered over the edge of the base flange and roll firmly to form a tight seal. Remove release liner and discard.
- Position the membrane cover over the base taking care to ensure the cover flange sits flat onto the Preprufe Membrane.
- Apply Preprufe Tape centered over the edge of the cover flange and roll firmly to form a tight seal. Remove release liner and discard.
- Preprufe Tape should overlap onto surfaces of tape, membrane, base, cover, etc. a minimum of 2 in. (50 mm).

Product Advantages

- Prevents water migration by forming a unique continuous adhesive bond to concrete
- Fully-adhered watertight laps using Preprufe Tape
- Simple and quick to install
- Easy to inspect
- Unaffected by wet conditions
- Unaffected by freeze/thaw and wet/dry cycling
- Unique shape allows easier concrete consolidation



Physical Properties for ABS Base

Property	Typical Value	Test Method
Compression	7290 lbs/in. ²	ASTM D695-02
Flexural strength	7910 lbs/in. ²	ASTM D790-03
Flexural modulus	286000 lbs/in. ²	ASTM D790-03
Impact strength (Notched izod)	72°F, 50% RH	4.5 ft-lbs/in.
	-20°F, 50% RH	2.3 ft-lbs/in.
		ASTM D256—method A
		ASTM D256—method A

Physical Properties for ABS Base

Property	Typical Value	Test Method
Tensile, minimum	2000 lbs/in. ²	ASTM D412
Elongation, minimum	1,000%	ASTM D412
Puncture resistance, maximum	177 lbs	ASTM E154
Thickness, minimum	25 mil	ASTM D3767
Peel adhesion, minimum	5 lbs/in.-width	ASTM D903, modified*

* Concrete is cast against the protective coating surface of the membrane cover and allowed to properly cure (7 days minimum). Peel adhesion of membrane cover to concrete is measured at a rate of 2 in. (50 mm) per minute at room temperature.

Preprufe Tieback Cover Supply

Sizes: 6 in. and 8 in.
Set: 1 ABS Base and 1 Membrane Cover (10 sets/carton)
Weight per carton: 30 lbs

Note: Remove release liner prior to installation

Preprufe Tieback Cover Dimensions

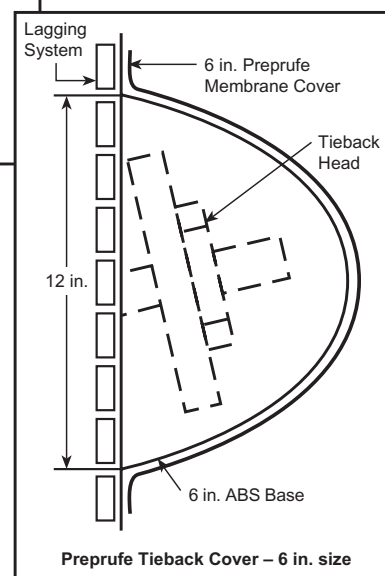
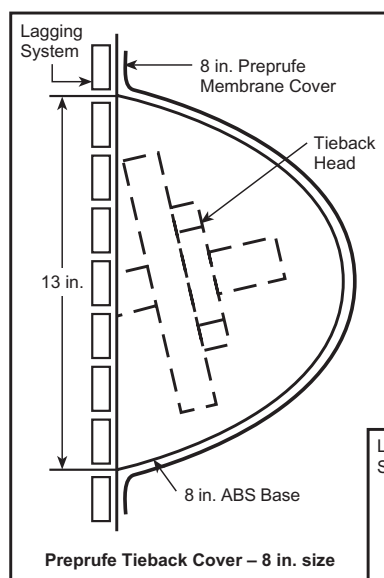
8 in. Size:

- Tieback anchor assembly maximum projection from face of wall is 8 in.
- To allow a 4 in. concrete cover, the minimum concrete wall thickness is 12 in.
- Tieback head plate maximum size of 8 in. x 8 in. x 2 in. for either cable or rod type anchors

6 in. Size:

- Tieback anchor assembly maximum projection from face of wall is 6 in.
- To allow a 4 in. concrete cover, the minimum concrete wall thickness is 10 in.
- Tieback head plate maximum size of 8 in. x 8 in. x 2 in. for either cable or rod type anchors

Contact your local Grace Representative for sizing information



www.graceconstruction.com

For technical assistance call toll free at 866-333-3SBM (3726)

Preprufe is a registered trademark of W. R. Grace & Co.—Conn.

We hope the information here will be helpful. It is based on data and knowledge considered to be true and accurate and is offered for the users' consideration, investigation and verification, but we do not warrant the results to be obtained. Please read all statements, recommendations or suggestions in conjunction with our conditions of sale, which apply to all goods supplied by us. No statement, recommendation or suggestion is intended for any use which would infringe any patent or copyright. W. R. Grace & Co.—Conn., 62 Whittemore Avenue, Cambridge, MA 02140. In Canada, Grace Canada, Inc., 294 Clements Road, West, Ajax, Ontario, Canada L1S 3C6.

This product may be covered by patents or patents pending.
 PF-158A Printed in USA 3/07

Copyright 2007. W. R. Grace & Co.—Conn.
 FA/LI/1M

GRACE