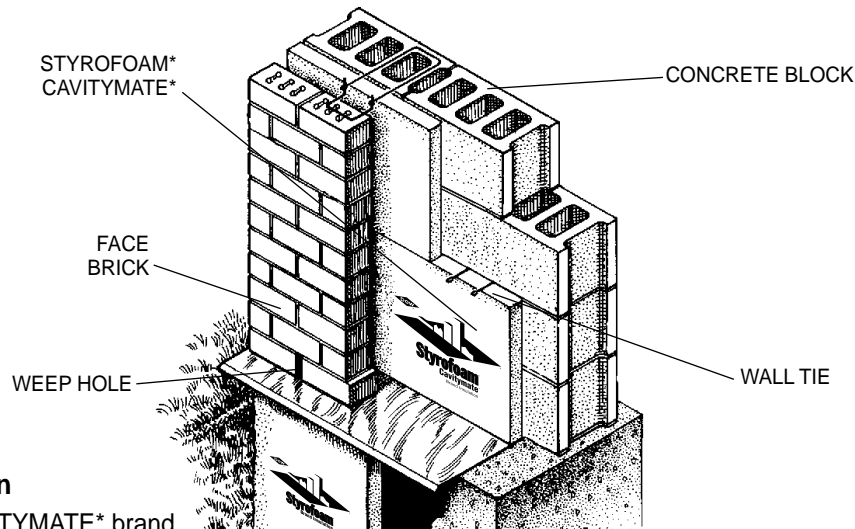


STYROFOAM CAVITYMATE

Cavity Wall Insulation



Product Description

STYROFOAM[®] CAVITYMATE[®] brand insulation is a moisture resistant, durable and lightweight extruded polystyrene foam specifically designed for use in wet cavity wall environments.

STYROFOAM CAVITYMATE brand insulation has all of the desirable characteristics of extruded polystyrene that architects and specifiers have come to depend on when choosing cavity wall insulation.

Specification

Specify STYROFOAM CAVITYMATE brand insulation instead of STYROFOAM brand Score Board to provide time savings and installation benefits to the contractor.

STYROFOAM CAVITYMATE brand insulation meets or exceeds the property requirements of ASTM C 578-95 Type X.

Sized 16" For Cavities

STYROFOAM CAVITYMATE brand insulation is available in 1.0", 1.5" and 2.0" thick x 16" wide x 96" boards. It has square edges on all four sides. This convenient size saves contractors time and money during installation because they do not have to cut and snap insulation boards. This 16" width is easier to handle and install than traditional 4' x 8' scored boards.

Superior Moisture Resistance

The cavity wall is a wet and hostile environment for anything which isn't comfortable and completely at home in the water. Given the fact that a building's cavity wall is designed to accommodate moisture and that moisture is the prime reason for

cavity wall insulation to lose its thermal resistance (R-value), it's critical that "water resistance" be the most important factor to consider when choosing cavity wall insulation.

STYROFOAM CAVITYMATE brand insulation is part of the STYROFOAM brand of products. STYROFOAM CAVITYMATE brand insulation is part of Dow's "Commercial" application/market specific product line that meets specific application needs.

Dow Supports The Industry

The Dow Chemical Company is a proud member of:



Property	Value	Units	Method
Thermal Resistance, min., aged @ 75°F mean temp.			
1.0"†	5.0	°F • ft ² • h/Btu	ASTM C 177, C 518
1.5"	7.5		
2.0"	10.0		
Vertical Compressive Strength, min., @ 10% deflection or yield	15	psi	ASTM D 1621
Water Absorption, max.	0.1	% by volume	ASTM C 272

† Consult your local Dow representative for availability.

*Trademark of The Dow Chemical Company

† A Business unit of the Dow Chemical Company and its subsidiaries

IN THE U.S.:

- For Technical Information: 1-866-583-BLUE (2583)
- For Sales Information: 1-800-232-2436

THE DOW CHEMICAL COMPANY

• Building Materials • 200 Larkin • Midland, MI 48674 • www.dowbuildingmaterials.com

NOTICE: No freedom from any patent owned by Dow or others is to be inferred. Because use conditions and applicable laws may differ from one location to another and may change with time, Customer is responsible for determining whether products and the information in this document are appropriate for Customer's use and for ensuring that Customer's workplace and disposal practices are in compliance with applicable laws and other government enactments. Dow assumes no obligation or liability for the information in this document. NO WARRANTIES ARE GIVEN; ALL IMPLIED WARRANTIES OF MERCHANTABILITY OR FITNESS FOR A PARTICULAR PURPOSE ARE EXPRESSLY EXCLUDED.

COMBUSTIBLE: Protect from high heat sources. For more information, consult MSDS and/or call Dow at 1-866-583-BLUE (2583). In an emergency, call 1-989-636-4400. Local building codes may require a protective or thermal barrier. Contact your local building inspector for more information.



Living.
Improved daily.

