

ROCK-ON™

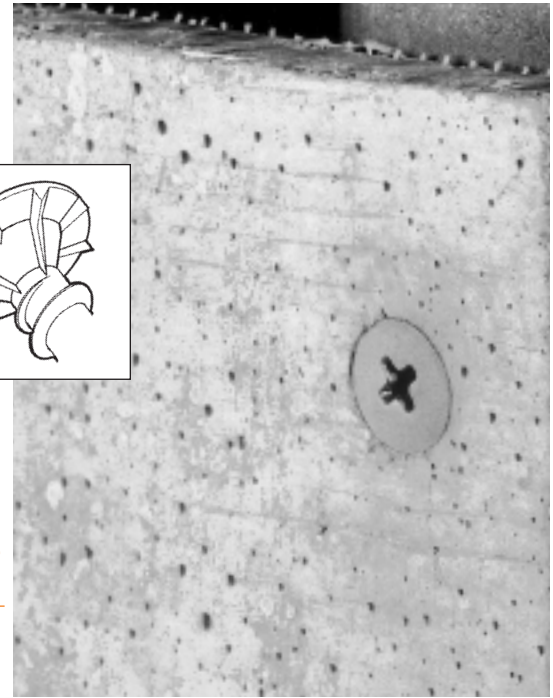
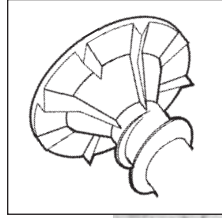
Cement Board Fasteners

High performance rib design is still the best!!!

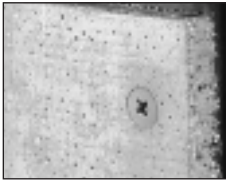
BACKER-ON™

Fiber Cement Backerboard Fasteners

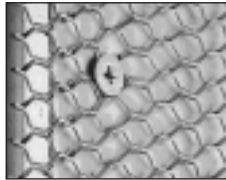
Recognized for use with HARDIEBACKER® cement backerboard.



Applications



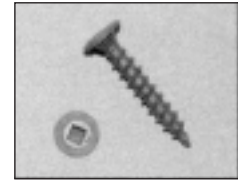
Cement-type boards or any dense sheathings to steel or wood studs.



Wire lath to steel or wood studs.



Plywood to steel or wood studs.



Hardie Fiber Cement Backerboard.

Product Features

Rock-On

- Rib design under head countersinks into dense material while preventing stripouts.
- Two point types for steel and wood applications.
- Larger head diameter increases board surface contact for greater pullover resistance.
- Rock-On is recommended for ACQ treated wood.

Backer-On

- Gimlet points starts easily - no predrilling.
- Serrated thread design provides reduced installation torque and superior holding power.
- Rib design under head countersinks into dense material while preventing stripouts.
- #2 square drive prevents bit from slipping.

Product Specifications

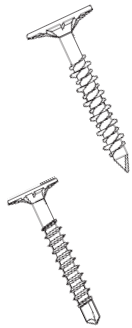
Rock-On

Diameter.....#8; #9
 Thread Form.....8-18; 9-15 Hi-Lo®
 Drill Point.....#8 Type S-12®; #9 Type "S"
 Head Style.....Wafer Head with countersinking ribs
 Finish.....Climacoat®

Backer-On

Diameter.....#10
 Thread Form.....10-10 Serrated
 Drill Point.....Gimlet
 Head Style.....Wafer Head with countersinking ribs
 Finish.....Long life epoxy topcoat/zinc plating.

Selector Guide



Part Number	Length	Material Attachment Range	Box Qty	Applications
Hi-Lo® Rock-On				• Cement Board to wood or light gauge steel 26-20 gauge
2151500*	9 x 1-1/4"	Up to 3/4" Material Thickness to Wood; 3/8" - 1" Material Thickness to Steel	5,000	
2153500*	9 x 1-5/8"	Up to 1-1/8" Material Thickness to Wood; 3/8" - 1-3/8" Material Thickness to Steel	4,000	• Cement Board to Steel Studs 20-12 Gauge
2155500	9 x 2-1/4"	Up to 1-3/4" Material Thickness to Wood; 1" to 1-7/8" Material Thickness to Steel	2,000	
S-12® Rock-On				
2156500*	8 x 1-1/4"	3/8" to 3/4" Material Thickness	5,000	
2159500*	8 x 1-5/8"	3/8" to 1-1/4" Material Thickness	4,000	
2139500	8 x 2-1/4"	1" to 1-7/8" Material Thickness	2,000	
Backer-On™				
2406000	10 x 1-1/4"	Up to 3/4" Material Thickness to Wood;	5,000	

*Fully Threaded

Performance Data







PULLOUT VALUES IN STEEL (GAUGES)								
	26	24	22	20	18	16	14	12
S-12	120	191	239	285	470	663	910	1424
Hi-Lo	163	242	314	370	-	-	-	-
Backer-On	271	371	457	615	-	-	-	-

WOOD (EMBEDMENT) #2 SPF 2 x 4				
	1/2"	3/4"	1"	1-1/4"
Hi-Lo	223	312	555	676
Backer-On	-	436	780	-

SHEET STEEL GAUGES								
Gauge No.	12	14	16	18	20	22	24	26
Decimal Equivalent	.105"	.075"	.060"	.048"	.036"	.030"	.024"	.018"

The values listed are ultimate averages achieved under laboratory conditions and apply to Buildex manufactured fasteners only. Appropriate safety factors should be applied to these values for design purposes.

Installation Guidelines

-  A standard screwgun with a depth sensitive nosepiece should be used to install cement board fasteners. For optimal fastener performance, the screwgun should be a minimum of 6 amps and have an RPM range of 0-2500.
-  Adjust the screwgun nosepiece to properly seat the fastener.
-  Worn or damaged bit tips should be replaced.
-  The fastener is fully seated when the head is flush with the work surface.
-  Overdriving may result in torsional failure of the fastener or stripout of the substrate.
-  The fastener must penetrate beyond the metal structure a minimum of 3 pitches of thread.



1349 West Bryn Mawr Avenue
Itasca, Illinois 60143
630-595-3500 Fax: 630-595-3549
www.itwbuildex.com

Rock-On™, Backer-on™, Climacoat®, Hi-Lo® and S-12® are trademarks of ITW Buildex and Illinois Tool Works Inc. Hardiebacker® is a registered trademark owned by James Hardie Research Pty Limited.

© 2010 ITW Buildex and Illinois Tool Works, Inc.