

DA1006 Cell Vent / DA1005 Weep Holes

DA1006 Cell Vent Product Description

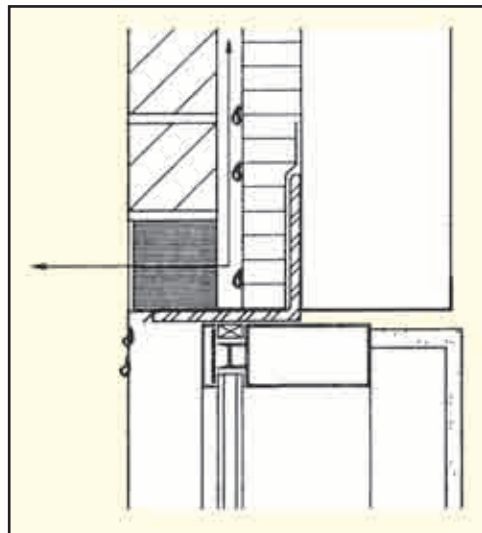
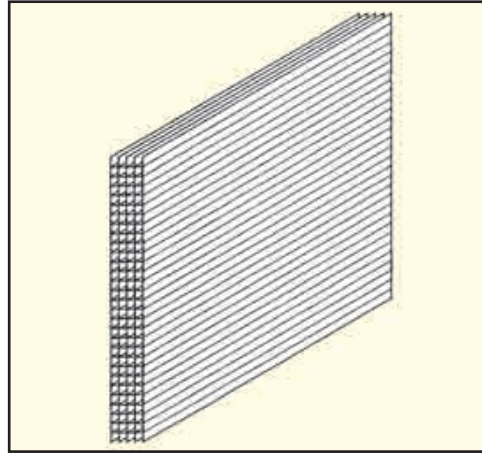
Dur-O-Wal's Vent is designed to ensure moisture entering or exiting the cavity will pass over the exterior veneer rather than drop into the core which may cause efflorescence or spalling. Cell Vent is manufactured from flexible ultra violet resistant polypropylene co-polymer.

DA1006 Cell Vent Features and Benefits

- The shape ensures the space between the masonry units is kept free of mortar.
- Available to suit all masonry veneer sizes whether they be brick, block or stone.
- Designed to be installed with the outside face to be 1/8" from the face of the masonry unit so the vent will be less visible and to eliminate dark shadow areas on the wall.
- Ease of installation for the mason.
- Colors available See Table 1 (may be subject to minimum order quantity).
- Custom sizes are available subject to minimum order quantity.

Warranty

Seller makes no warranty of any kind, express or implied, except that the goods sold under this agreement shall be of the standard quality of seller, and buyer assumes all risk and liability resulting from the use of the goods, whether used singly or in combination with other goods. Seller neither assumes nor authorizes any person to assume for seller any other liability in connection with the sale or use of the goods sold, and there is no oral agreement or warranty collateral to or affecting this transaction.



DA1006 Cell Vent

Sizes & Colors

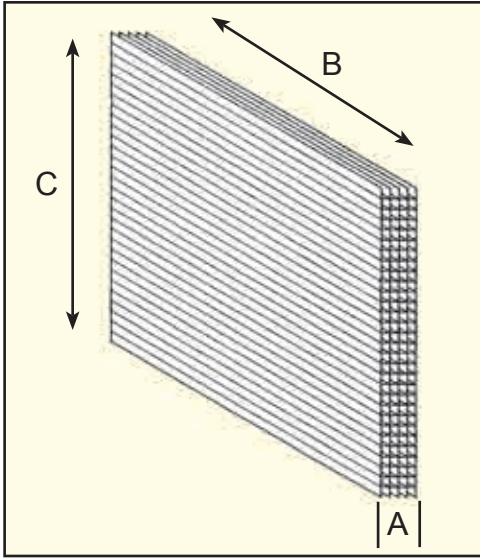


Table 1

Sizes:

Standard: A:3-3/8" x B:3-3/8"x C:2-1/2"

Jumbo: A:3/8"x B:3-5/8"x C:3-5/8"

Colors:

Clear, Almond, Cocoa (Light Brown)

Brown (Dark Brown) & Grey (other colors available by special order.)

DA1005 Weep Holes

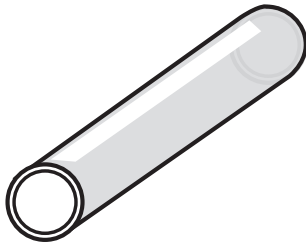


Table 2

Standard translucent plastic tube

Standard size 3/8 inch outside diameter

Lengths available in 4" and 8" inches

Packaged 1,000 pcs. per carton for 4 inch lengths

Packaged 500 pcs. per carton for 8 inch lengths.