

# PRODUCT SUBMITTAL

## Mortar Net<sup>®</sup> Weep Vents<sup>™</sup>

### DESCRIPTION

**MORTAR NET WEEP VENTS<sup>™</sup>** are used in conjunction with either Mortar Net<sup>®</sup> or Residential HouseNet<sup>®</sup> to keep weep holes open and free of insects and debris. Insert a Mortar Net Weep Vent<sup>™</sup> no more than 24" apart to allow cavity walls to breathe, drain, and dry quickly. They are 90% open-weave mesh and available in six colors to match mortar color.

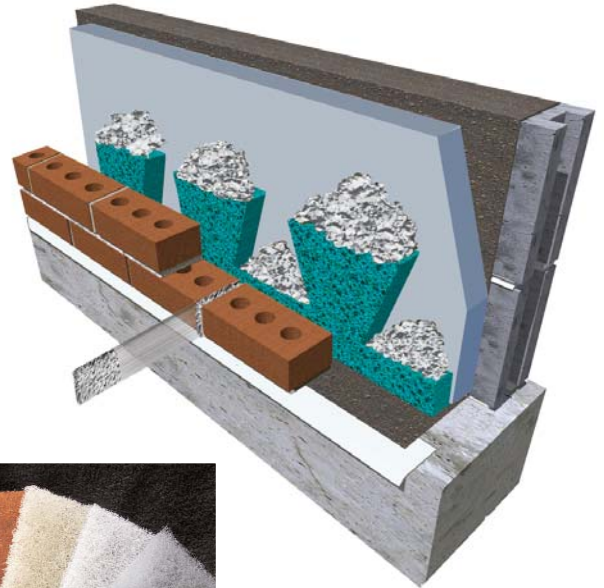
### SHORT FORM SPEC

Provide UV stable recycled polyester mesh, rectangular shape, inserted in brick cavity wall open head joint. Match color selection with mortar color. Available in six colors: brown, tan, red, almond, white, gray. Install per manufacturer's instructions.

Product: Subject to compliance with requirements, provide "Mortar Net Weep Vents<sup>™</sup>" by Mortar Net<sup>®</sup> USA, Ltd.

### MANUFACTURER

**Mortar Net<sup>®</sup> USA, Ltd.**  
541 South Lake Street, Gary, IN 46403  
Telephone: (800)664-6638  
Fax: (219)939-3877  
Email: info@mortarnet.com  
Website: www.MortarNet.com



*Specifier Note: Mortar Net Weep Vents<sup>™</sup> are manufactured of UV resistant, 50% recycled polyester mesh (33% pre-consumer and 17% post-consumer). This 90% open mesh has an antimicrobial additive to inhibit mold growth and is bonded with a flame-retardant adhesive to provide resilience and strength.*

### SUBSTITUTIONS

No substitutions permitted.

Mortar Net Weep Vent<sup>™</sup> size 2-5/8" x 3-1/2" x 1/2"  
Available Colors: Brown, Tan, Red, Almond, White, Gray

DATE: \_\_\_\_\_

PROJECT: \_\_\_\_\_

FIRM: \_\_\_\_\_ PHONE: \_\_\_\_\_

APPROVAL: \_\_\_\_\_ DATE: \_\_\_\_\_

GENERAL CONTRACTOR: \_\_\_\_\_

BID DATE: \_\_\_\_\_

COMMENTS: \_\_\_\_\_

\_\_\_\_\_

\_\_\_\_\_

\_\_\_\_\_