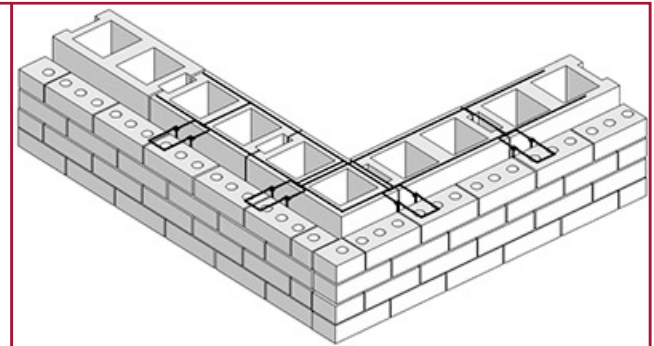
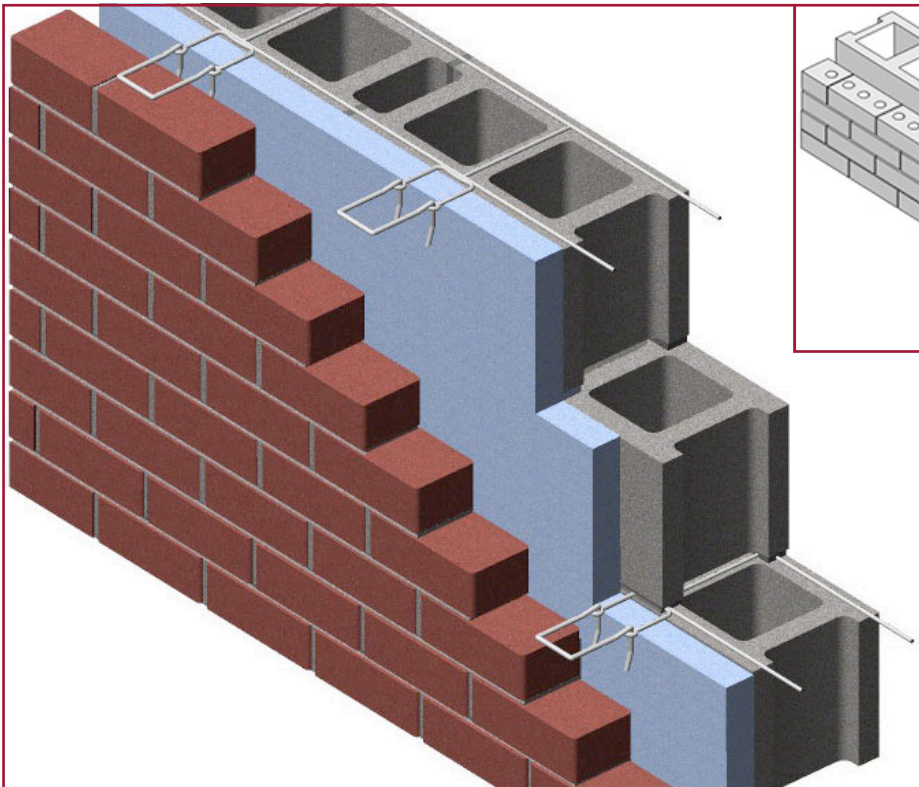


PRODUCT SUBMITTAL

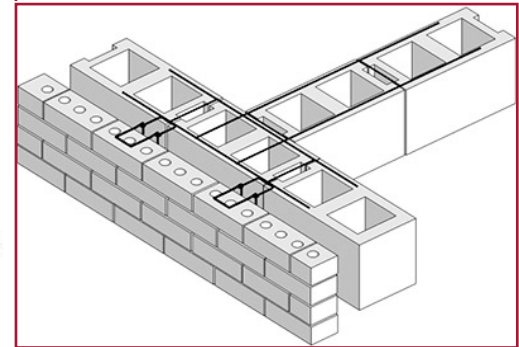


WIRE-BOND

Series 800 Ladder Level-Eye Ladder (Hook & Eye)



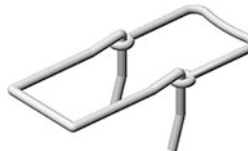
PREFABRICATED CORNER



PREFABRICATED TEE

16 O.C. cross rods allow core clearance.

- Double eye is butt welded to side rod 16" O.C.
- Height of double eye will not exceed 3/16" in bed joint.
- Easier to maintain 3/8" mortar joint.



3/16" Hook & Eye

STRUCTURAL PERFORMANCE CHARACTERISTICS

Capable of withstanding 100 lbs load in tension and compression without deforming or developing play in excess of .05 inch

MATERIAL CONFORMANCE

ASTM A82 / A82M - (Cold drawn steel wire)
Tensile Strength - 80,000 psi
Yield Point - 70,000 psi
ASTM A951 / A951M-06 - (Standard Specification for Steel Wire for Masonry Joint Reinforcement)
ACI / ASCE 530 - (Building code requirements for masonry structures
Mill Galvanized / Zinc Coating: **ASTM A641 / A641M (0.10 oz per sq ft)**
Hot Dip Galvanized after fabrication / Zinc Coating
ASTM A153 / A153M-B2 (1.50 oz per sq ft)
Stainless Steel **ASTM 580 / ASTM 580M Type 304** (Type 316 available on special order)



WIRE Recycled Content:

Mill Galvanized & Hot Dip,
87% Post-Consumer
13% Post Industrial / Pre - Consumer
Stainless Steel,
60% Post Consumer
V O C Content - 0%

SIZES / FINISHES

- Mill Galvanized / Zinc Coating: **ASTM A641 / A641M (0.10 oz per sq ft)**
- Hot Dip Galvanized after fabrication / Zinc Coating
ASTM A153 / A 153 - B2 (1.50 oz per sq ft)
- Stainless Steel **ASTM 580 / ASTM 580M Type 304** (Type 316 available on special order)

WIRE SIZE:

	Side Rods	Cross Rods
<input type="checkbox"/> Standard	9 Gauge (.148 in)	9 Gauge
<input type="checkbox"/> Heavy Duty	3/16" (.187 in)	9 Gauge
<input type="checkbox"/> Extra Heavy Duty	3/16" (.187 in)	3/16"

Note: Specs apply to single and double sided walls. Ex: 8-2-4 or 4-2-8-2-4

Corporate Office: 400 Roundtree Rd Charlotte, NC 28217
TEL: (800) 849-6722 FAX: (704) 525-3761

Mailing Address: P.O. Box 240988 Charlotte, NC 28224



www.wirebond.com

Memphis Plant: 2365 Harbor Ave. Memphis, TN 38113
TEL: (800) 441-8359 FAX: (901) 775-9449

Mailing Address: P.O. Box 13124 Memphis, TN 38113