

DA411 Masonry Wall Top Stabilizing Anchor

Product Description

Mechanical anchoring system designed to resist lateral loads at the top of masonry walls. It consists of a steel dowel, vertically welded to a steel plate. The assembly is mounted to the underside of a beam or parent structure via mechanical anchors or welding. Slots in the plate provide field adjustment of the assembly. The dowel, sleeved with a plastic tube, is bedded in mortar within the riglet of a sash block. The closed end sleeve prevents the dowel from bonding to the mortar and allows for vertical deflection.

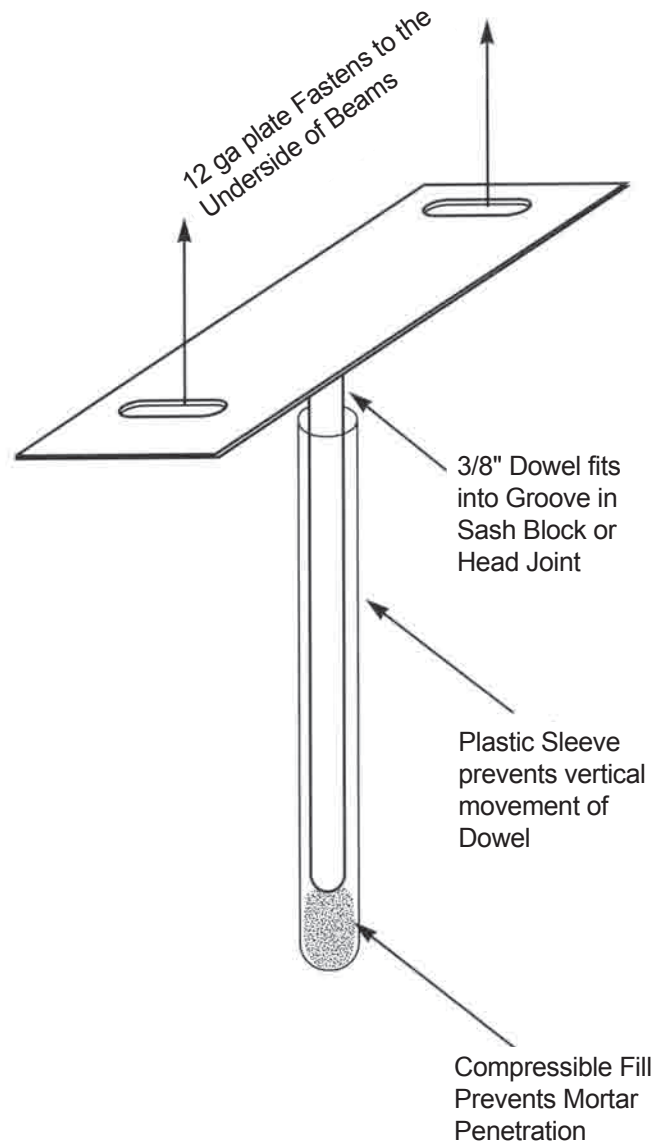
Performance Characteristics

Ultimate Shear Load = 900 lbs.

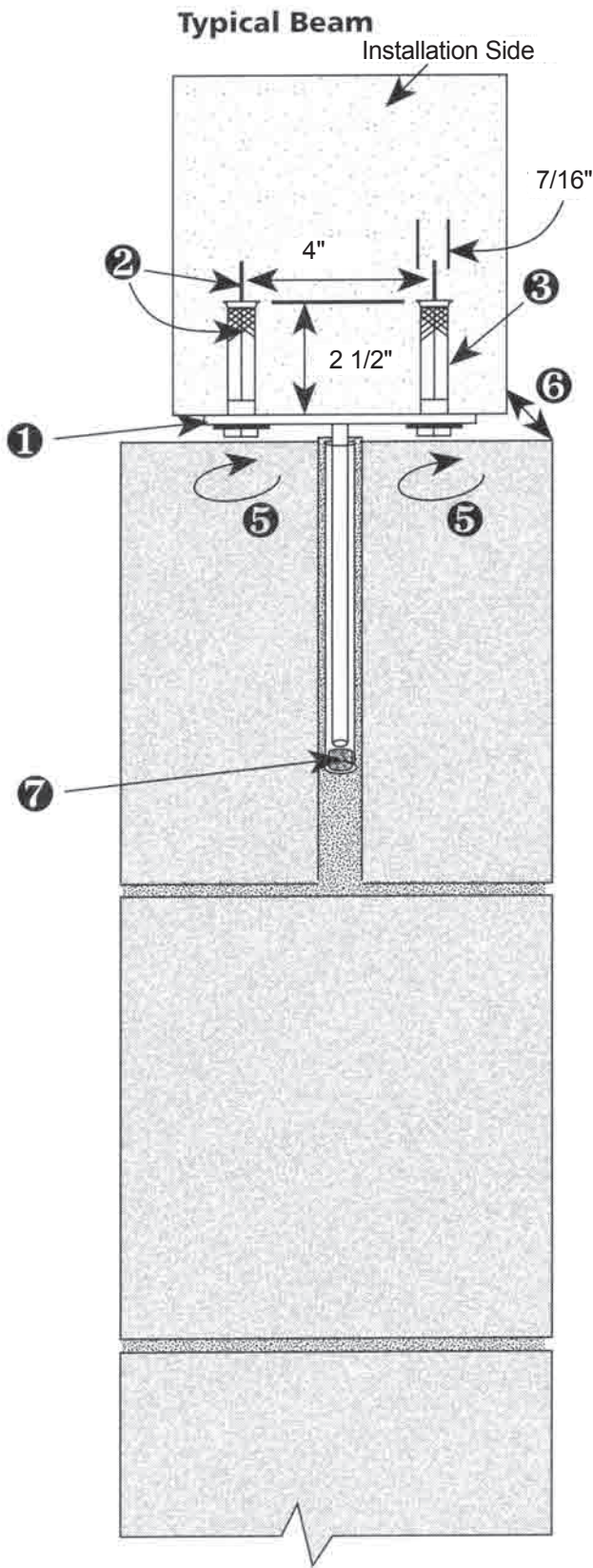
Benefits

- Resists lateral loads at the top of Masonry Walls
- Installs Easily
- Allows for live load vertical deflection
- Slotted base plate for accurate installation positioning
- Concealed within partition wall - no exposed hardware
- Available with corrosion resistant finish

Material / Specifications	Plate	Pin
ASTM A1008, A109, A1011	12 gage	N/A
ASTM A108	N/A	3/8" x 6"
Finish: Hot Dip Galv. ASTM A153, Class B-2		



Typical Installation Technique (for Mounting to Concrete)



1. Mark beam location for assembly location.
2. Drill two, 7/16" diameter holes, 4" apart and 2 1/2 deep, perpendicular to the masonry wall. Blow out hole.
3. Assemble 2 DUR-O-WAL fasteners, DA5610 to the assembly and insert anchors into drilled holes.
4. Tap assembly into drilled holes until the anchor and plate are in contact with the concrete surface.
5. Tighten fasteners to 50-100 in/lb.
6. To adjust final location, loosen bolts, adjust dowel with plastic sleeve into sash opening into the block.
7. Mortar sleeved dowel into place. Sponge filler should be at base of plastic sleeve.
For steel applications, weld plate at intended location.

Order Information

DA411 - Hot Dip Galvanized Assembly with Plastic Sleeve and Sponge Filler packaged 50 pcs. per carton.

DA5610 - Zinc Plated Carbon Steel Expansion Anchor with Brass Sleeve and Cone (2) and (3) on detail. Order 2 anchors for each DA411 when mounting to concrete.