

DESLAURIERS, INC.

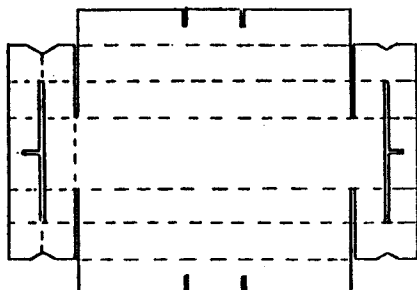


P.O. BOX 189
BELLWOOD, IL 60104
(708) 544-4455

IN ORDER TO ATTAIN OPTIMUM USE OF BOX VOIDS, IT IS IMPORTANT TO OBSERVE THE FOLLOWING:

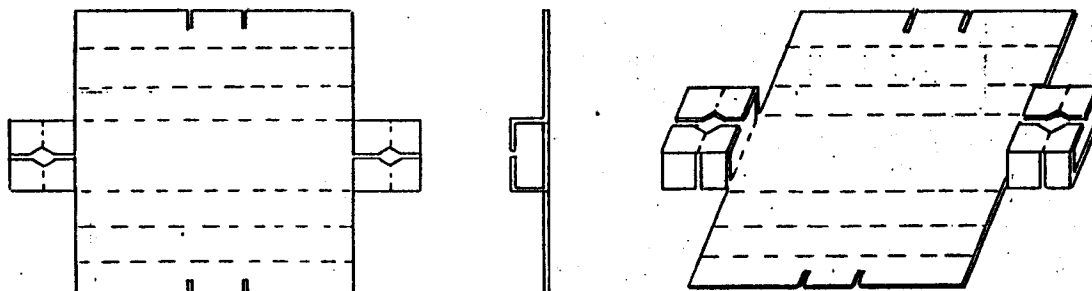
- A. Make certain site is properly graded - level, with good drainage.
- B. Forms should be properly braced and butted tightly together i.e., five 12" wide forms placed side by side should measure 60" NOT 63".
- C. Use planks for walk ways to minimize direct traffic on forms.
- D. Place pads under chairs or use chairs with runners to prevent puncturing.
- E. Use care when placing concrete.
- F. Store forms in Dry Area.

Step 1



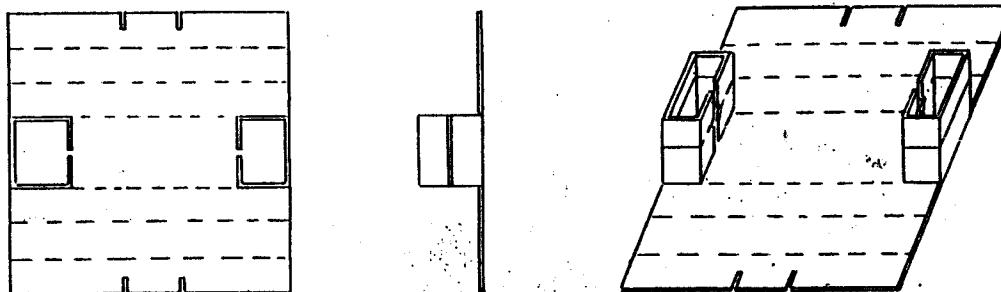
Inspect form for possible damage in transit, such as rips, holes, etc. Damaged forms should be discarded.

Step 2



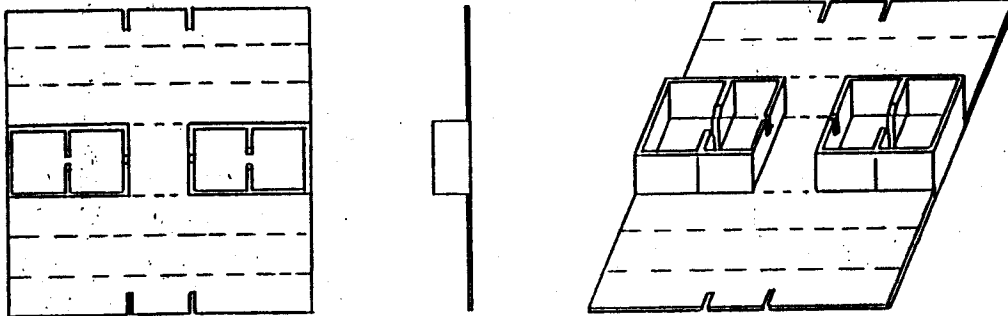
Form both end panels into box shape as shown.

Step 3



Take box shaped ends from step 2 and fold up 90° until inside of box is flush with cover sheet as shown.

Step 4



Fold top of box shaped ends 180° toward center of form until flush with cover sheet, as shown.

Step 5



Fold up each side, as shown.

Step 6



Fold each flap toward the center and into the partitions and form is ready for use.