

Match 8" 10" or 12" block to the corresponding Blok-Flash size.

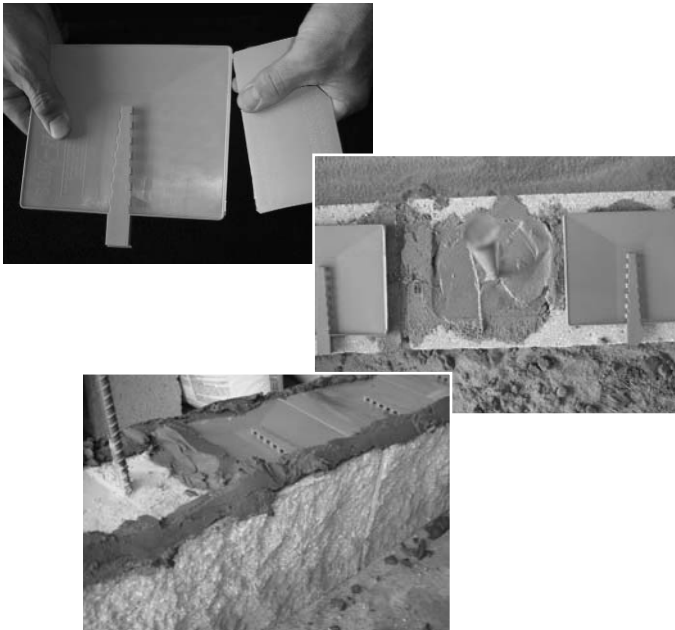
1 LAYOUT (FOR ABOVE GRADE ONLY)

- Lay the course(s) of block below the desired flashing level until above grade. BLOK-FLASH is to be installed ABOVE GRADE ONLY.



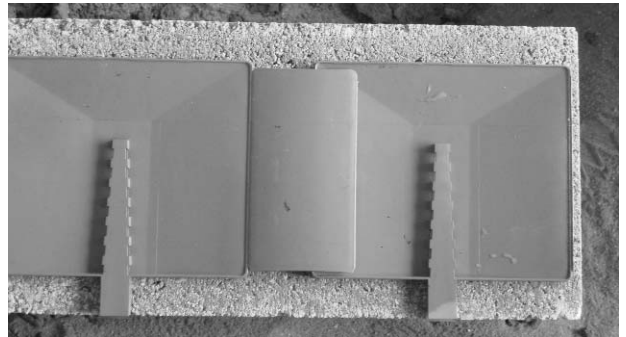
3 VERTICAL REBAR / GROUDED CELLS / CORNERS

- Where walls are reinforced, eliminate the Blok-Flash pan at the grouted core and detach the connector bridge from the adjoining pan by bending it back and forth a few times. Use same technique for corners.
- Cross bed webs adjacent to the grouted core making sure to overlap the Blok-Flash flange. Use same technique for corners.



2 PLACEMENT

- **OPTION A:** Install the Blok-Flash course by spacing units over the cores of each block.
- **OPTION B:** Install the Blok-Flash course evenly along the formed concrete foundation or slab.
- **FOR BOTH OPTIONS A & B:**
 - Use the reference lip on bottom of the Blok-Flash spout to position the pan against front of foundation or block. The drip edge on the weep spout will extend slightly.
 - Make sure the connector bridges overlap the next pan. This will divert water into adjoining Blok-Flash pans.



4 MORTAR SPREADING

- Use standard mortar spreading techniques with mortar lapped, first over the inner and second over the outer flanges of the Blok-Flash pans. This will stabilize the pans during installation and later help divert moisture into the Blok-Flash pans.
- Apply end dam front to back at grouted cell.



Match 8" 10" or 12" block to the corresponding Blok-Flash size.

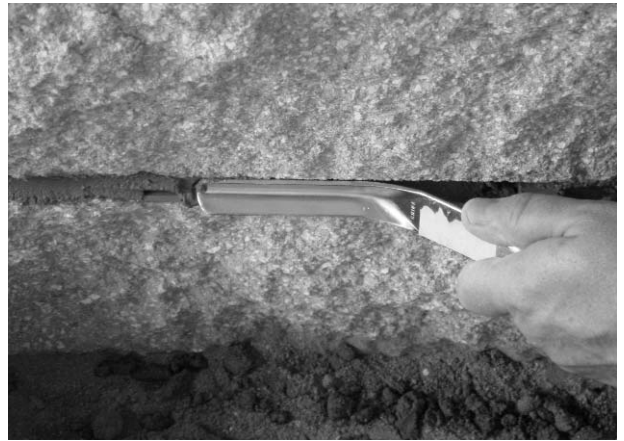
5 DRAINAGE

- Install the included 7" x 16" mesh Blok-Flash Drainage Mattes in each core above the Blok-Flash course allowing moisture to drain to Blok-Flash pans below and out the integrated weep spouts. (This will replace pea gravel.)



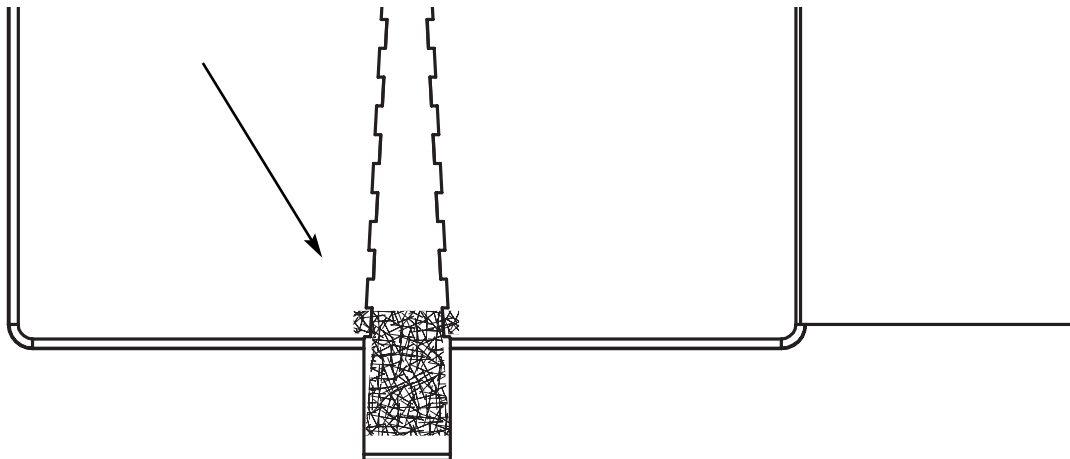
6 TOOLING

- Tool all head and bed joints and remove any obstruction from the weep spouts.



7 BUG GUARD

- Install the included Bug Guards by inserting one in each spout.
- Slide the end with the locking tabs in first.
- Use a screwdriver (or other available tool) to gently push to Bug Guard in the weep spout until mesh is recessed approximately 1/4" allowing the Bug Guard to "lock" in place. (Recessing the Bug Guard makes it difficult to remove by unauthorized persons.)



Warning: BLOK-FLASH[®] is one part of a drainage system that will perform best when used in conjunction with integral water repellent in the C.M.U. and mortar, reducing bridging and promoting the downward migration of moisture into the BLOK-FLASH[®] pans. Also, foam filling CMU cores may inhibit the downward migration of moisture, preventing any single-wythe flashing system from draining. Use loose fill, inserts or other insulation methods that will not obstruct the drain-ability of the wall system. Contact your nearest masonry supplier for information on these systems.