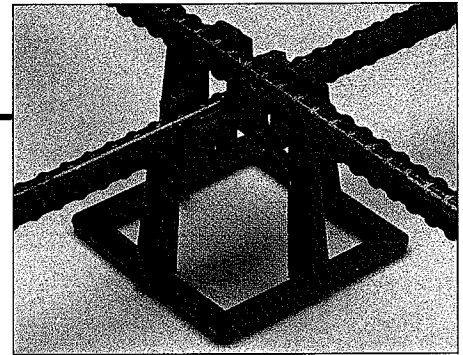


HERCULES CHAIR[®]

DATA SHEET



MADE IN THE USA

PATENTED REBAR SUPPORT

MATERIAL P6M5U-003 (POLYPROPYLENE COPOLYMER)

TYPICAL RESIN PROPERTIES	ASTM TEST METHOD	VALUE	UNIT
MELT FLOW RATE	D1238	18	G/10 min
DENSITY	D1505	0.900	G/CM ³
TENSILE	D638	3,200	PSI
FLEXURAL MODULUS	D790	145,000	PSI
DEFLECTION TEMP	D648	180	F
HARDNESS VALUE	R-Scale	65	

STRENGTH

CHAIR SIZE 1-1/2"

MAXIMUM LOAD 1,599 lbs

Load applied to the bar at a rate of .5" deflection per minute until the support fails. Point loads are determined at the weakest point on continuous supports.

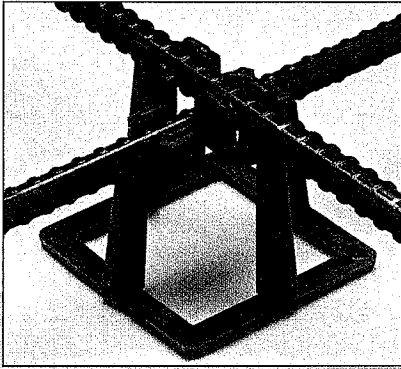
The **HERCULES CHAIR[®]** meets all requirements as a CRSI Class 1 Bar Support

Distributed By

--	--

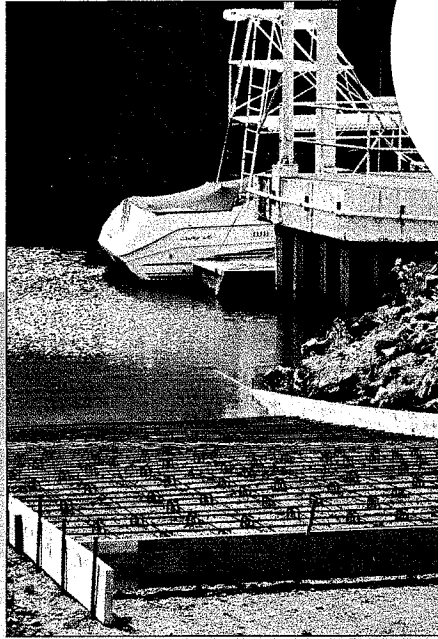
HERCULES CHAIR[®]

**70%
FASTER**
than wire tying

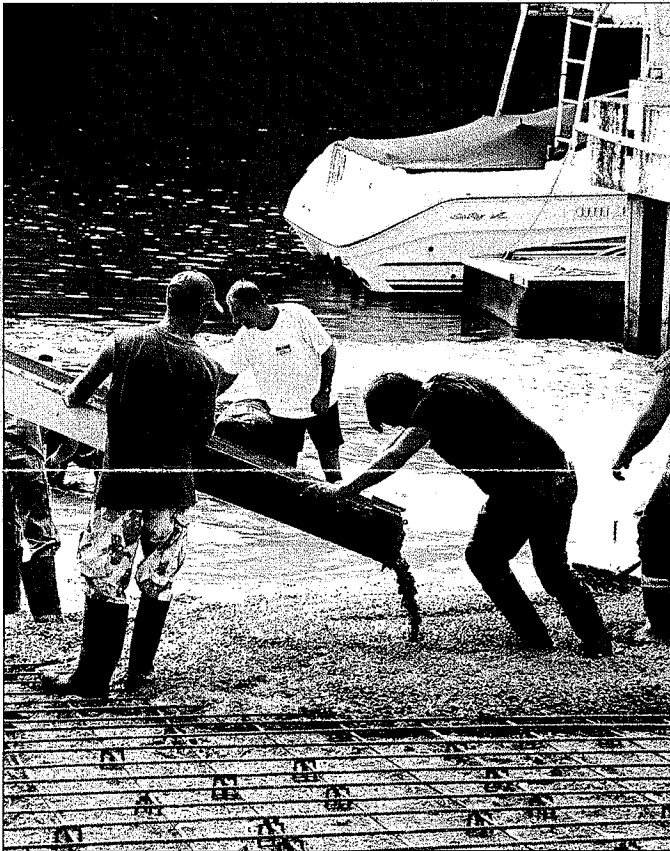


snap snap = done

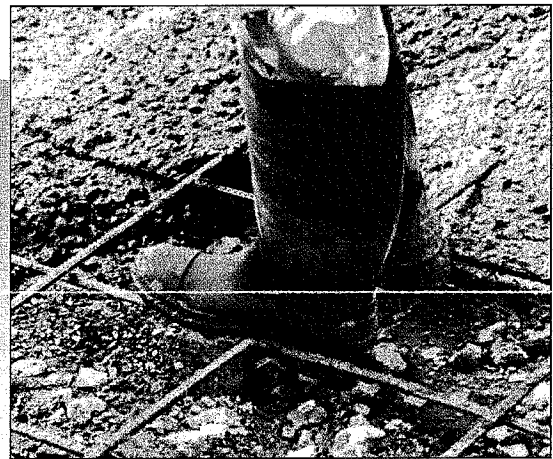
Polypropylene support with patented fastening system assures proper location of rebar during concrete placement.



***perfect
position***



professional finish



strong

Designed to allow for maximum concrete flow.
Two supports available for #4 and #5 rebar.

PERFECT FOR :
FOOTERS - SLABS - FLOORS - SIDEWALKS -
DRIVEWAYS - ANY OTHER CONCRETE APPLICATIONS