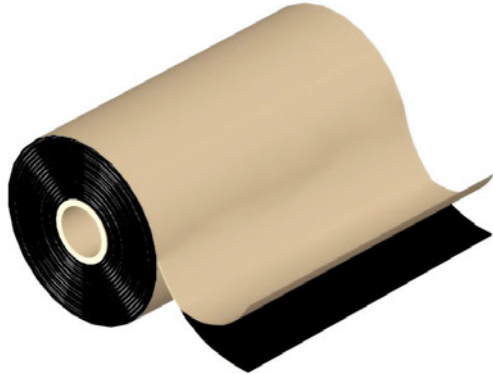


PRODUCT SUBMITTAL



Aqua Flash 500 (Polyethylene / Rubberized Asphalt



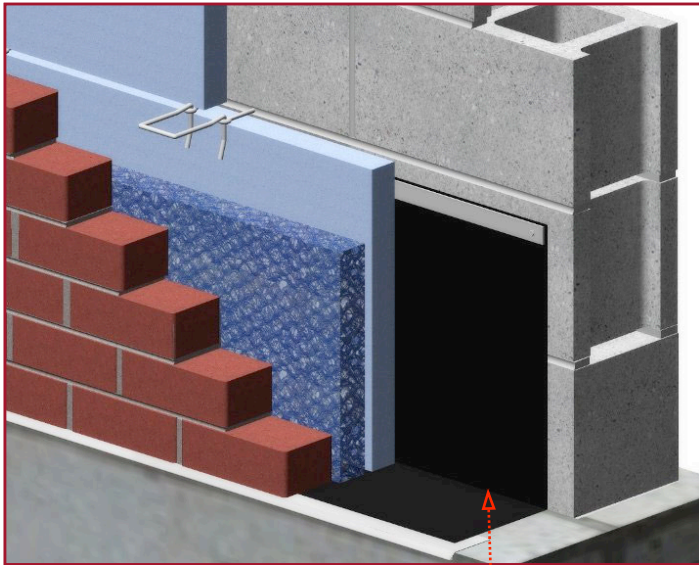
DESCRIPTION

A 40 mil composite sheet type membrane consisting of high density cross-laminated polyethylene film bonded to highly adhesive rubberized asphalt with a removable release liner.

Features:

Self-sealing, self-sticking, self-healing whereby the adhesive will elongate and recover if somewhat damaged. Has excellent puncture resistance

Use Aquafash primer and WireBond Flashing Mastic when needed to condition the substrate surface and mastic to seal all laps and joints.



Aqua Flash 500

TECHNICAL DATA

Property	Average Values	Test Method
MVT	0.02 grains max/sq.ft./hr inHG	ASTM E96 Method B
Water Absorption	-1% by weight. Max.	ASTM 0570
Pliability at 180° Bend over 1 / Z Mandrel	to -30°F no crack or peel	ASTM 0146
Peel Adhesion (Dry)	i 0.0 lbs./in..min.	ASTM 0903
Peel Adhesion (Wet)	5.0 lbs./in., min..	ASTM 0903
Lap Adhesion at 25°F	6.0 lbs./in., min..	ASTM 1876
Elongation	350%	ASTM 0412
Tensile Strength (film (membrane)	7000 psi 800 psi	ASTM 0882 ASTM 0412 (Die C Modified)
Puncture Resistance	90 lbs.. min.	ASTM E154
Rim	170 lbs.. min.	ASTM 0781
Tear Resistance		
Propitiation MO	12.0lbs.	ASTM 01938
Iniation MO	161bs.	ASTM 01004

SIZES

Sizes:

Standard roll widths:

3" 6" 12" 16" 18" 24" 36"

Standard roll length: 50 lineal feet.

Custom sizes available

Uses:

Thru-Wall, Concealed, Foundation Sill, Base, Parapet, and Head and Sill flashing. Can be applied to masonry concrete, pre-cast concrete, steel wood and gypsum.

Corporate Office: 400 Roundtree Rd Charlotte, NC 28217
TEL: (800) 849-6722 FAX: (704) 525-3761

Mailing Address: P.O. Box 240988 Charlotte, NC 28224



www.wirebond.com

Memphis Plant: 2365 Harbor Ave. Memphis, TN 38113
TEL: (800) 441-8359 FAX: (901) 775-9449

Mailing Address: P.O. Box 13124 Memphis, TN 38113