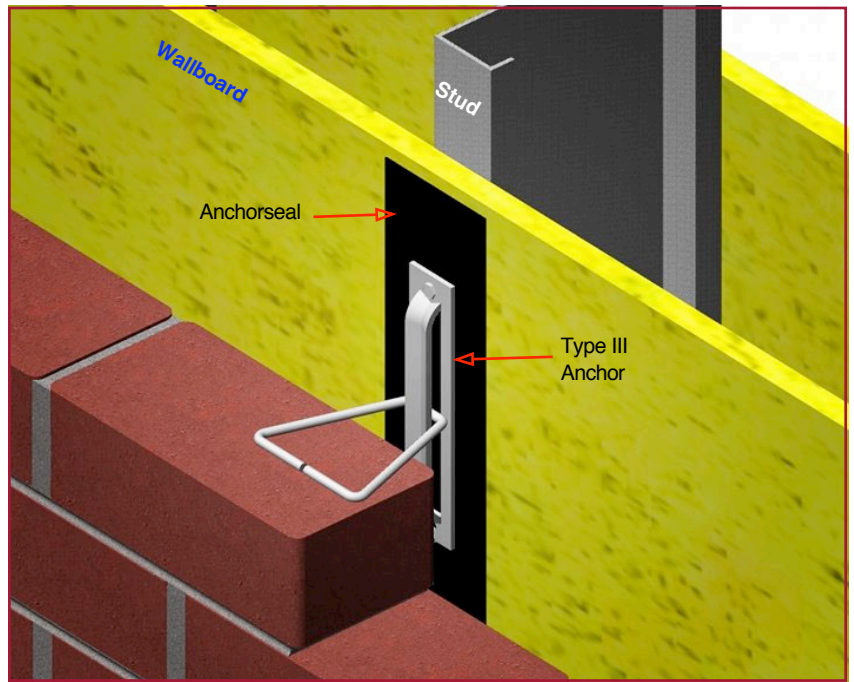


PRODUCT SUBMITTAL

WIRE-BOND

4110 Anchorseal Tape



COMPOSITION / MATERIALS

A 40 mil thick dual barrier membrane consisting of 32 mills of pliable, highly adhesive rubberized asphalt, completely and integrally bonded to an 8 mil, high density, cross-laminated polyethylene film.

Anchorseal is used in conjunction with, RJ711, Type II and Type III anchors.

Shown in illustration with the Type III anchor.

SIZES

Sizes:
40 mil x 3" wide

Standard roll length: 50 lineal feet.



Corporate Office: 400 Roundtree Rd Charlotte, NC 28217
TEL: (800) 849-6722 FAX: (704) 525-3761

Mailing Address: P.O. Box 240988 Charlotte, NC 28224



www.wirebond.com

Memphis Plant: 2365 Harbor Ave. Memphis, TN 38113
TEL: (800) 441-8359 FAX: (901) 775-9449

Mailing Address: P.O. Box 13124 Memphis, TN 38113