



AP™ Foil-Faced

Polyisocyanurate Foam Sheathing

PRODUCT DESCRIPTION

Johns Manville AP Foil-faced sheathing board is composed of a uniform closed-cell polyisocyanurate foam core bonded on each side to a trilaminate foil facer. One side has a printed foil reflective facer and the other side has a printed non-reflective foil facer, depending on your building needs.

AP is now produced with a non-HCFC blowing agent, meeting the latest environmental regulations for using chemicals that do not harm the protective ozone layer in the earth's atmosphere. The new formula enhances the positive environmental profile for this energy-saving product.

APPLICATIONS

AP is designed for easy installation where high thermal efficiency is required within both new and retrofit construction:

- Interior insulation behind gypsum board
- Behind all siding types, including brick veneer
- Masonry cavity wall insulation
- Behind exterior stucco/lath systems
- Cathedral ceilings
- Insulation underlayment leveling board for re-siding

STORAGE

Store AP sheathing flat on pallets elevated above the floor or ground and standing water. If stored outdoors, keep dry by covering completely with a waterproof tarpaulin.

SPECIFICATION COMPLIANCE

ASTM C 1289, Type I, Class 1
ASTM D 1621 Compressive Strength, 20 psi (138 kPa)
ASTM D 2126 Dimensional Stability, 2% max, 7 days (length and width)
ASTM E 96 Moisture Vapor Transmission* < 1 perm (57.5 ng/Pa-s-m²)
ASTM C 209 Water Absorption* <1% volume
ASTM E 84 Flame Spread* 75
Service Temperature: -100°F to 250°F (-73°C to 122°C)
California State Insulation Quality Standards

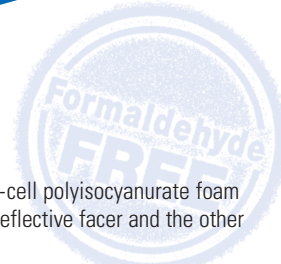
* Foam core only.

SHORT FORM SPECIFICATION

All insulation shown on drawings of specified herein shall be "Johns Manville AP Foil-Faced Polyisocyanurate Foam Sheathing." Thermal resistance "R" (RSI) values of the insulation shall be R (RSI) _____ in walls.

LIMITATIONS OF USE

Check applicable building codes. As with all foam plastics, this product will burn. Johns Manville AP sheathing products must be protected from open flame and kept dry at all times. Do not leave exposed. AP sheathing requires an interior finish of a minimum 1/2" (13 mm) gypsum board or equivalent 15-minute fire barrier. AP sheathing must be protected from outside elements like wind, rain and sunlight.



PERFORMANCE ADVANTAGES

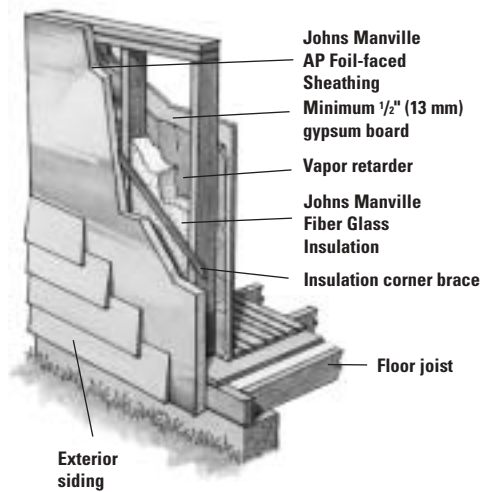
- Thermal Efficiency – polyisocyanurate foam provides the highest degree of insulation efficiency available, resisting heat transfer with R-values up to R-22.8 (RSI-4.01). It reduces thermal bridging at the framing members where fiber glass batts don't insulate, improving the overall thermal efficiency of walls.
- Noncorrosive – does not accelerate corrosion of pipes, wiring or metal studs.
- Lightweight – easy to handle, can be cut with a utility knife or saw.

INSTALLATION

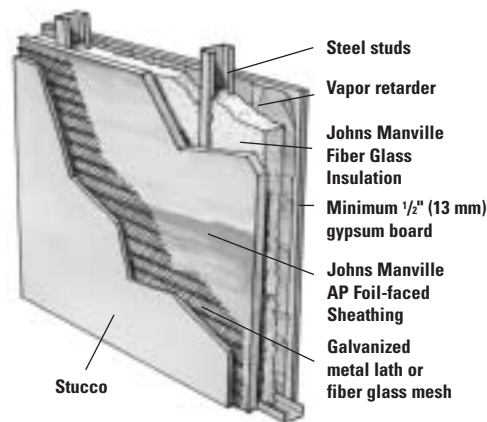
Exterior Installation

Corner bracing is necessary when building with non-structural sheathing. Secure boards with $\frac{3}{8}$ " (10 mm) head diameter galvanized roofing nails long enough to penetrate the stud at least $\frac{3}{4}$ " (19 mm), or use 1" (25 mm) crown 16 gauge staples with leg length sufficient to penetrate framing $\frac{1}{2}$ " (13 mm). Fasten boards to framing every 8" (203 mm) horizontally and every 12" (305 mm) vertically. Wood, hardboard, vinyl or aluminum siding can be installed over AP in accordance with siding manufacturers' instructions. Adhere wire mesh for stucco finishes over AP by nailing to the studs. Industry practice restricts the thickness of foam sheathing under conventional stucco to 1 $\frac{1}{2}$ " (38 mm) maximum due to the potential for nail deflection. Attach brick veneer over AP by nailing wall ties to the studs. In those parts of the country where degree days total 2000 or more, it is recommended that an interior vapor retarder be installed. Consult your area utility or weather bureau for degree-day information. Consult local building department for code requirements on vapor retarders.

Exterior Application



Exterior Stucco System



AP™ Foil-Faced

Polyisocyanurate Foam Sheathing

Visit our website at www.jm.com
Or call: 1-800-654-3103

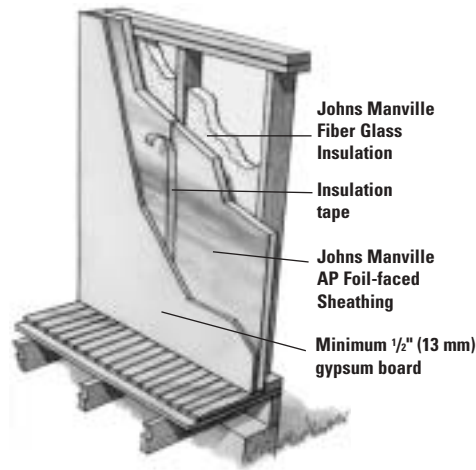
INTERIOR INSTALLATION

When used as an underlayment, AP sheathing is easily attached to the interior stud surface, and should always be covered with a minimum 1/2" (13 mm) gypsum board. Apply vapor retarder tape to all joints. AP sheathing does not, in and of itself, need a vapor retarder.

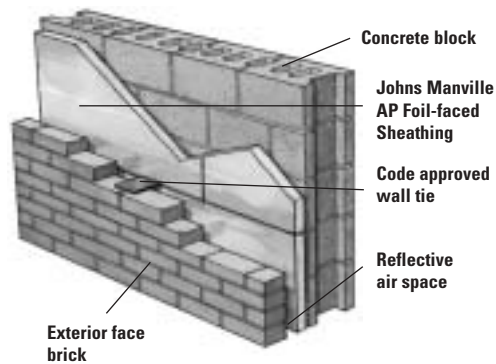
Cavity Wall Installation

Install 16" (406 mm) or 24" (610 mm) AP horizontally between the concrete block wall and the exterior masonry. Attach insulation panels against the inner wall using construction-grade adhesive with wall ties at the insulation joints. AP may be installed directly to oil-based waterproofing compounds.

Interior Application



Cavity Wall Construction



AP™ Foil-Faced

Polyisocyanurate Foam Sheathing

Visit our website at www.jm.com
Or call: 1-800-654-3103

BUILDING CODE COMPLIANCE AND FIRE HAZARD CLASSIFICATION

	ICBO	SBCCI	BOCA	ICC	Flame Spread*	Smoke Developed*
AP Foil-faced Polyisocyanurate Foam Sheathing	UBC Section 2602 (1997)	SBC Section 2603 (1999) International One and Two Family Dwelling Code, Section 317 (1998)	NBC Section 2603 (1999)	IBC Section 2603 (2003) IRC Section R314 (2003)	75 or less	200 or less

*Per ASTM E 84.

AVAILABLE FORMS*

Specification Compliance	R-value** (hr-ft ² ·°F/Btu)	RSI-value (m ² ·°K/Watts)	Thickness	
			(in)	(mm)
ASTM C 1289	22.8	4.01	3 ½	89
AP Foil-faced	19.5	3.43	3	76
Type 1	16.3	2.87	2 ½	64
Class 1	13.0	2.29	2	51
	9.8	1.73	1 ½	38
	6.5	1.14	1	25
	5.0	0.88	¾	19
	4.1	0.72	¾	16
	3.3	0.58	½	13

* Consult your local sales representative or product availability chart for other available sizes and R-values. Upon special request, JM will provide boards scored to 16" (406 mm) or 24" (610 mm) widths for easy application in cavity walls. Standard product lengths include 8 and 9 ft. (2440 and 2740 mm).

** R-value determined by ASTM C 518 at 75°F mean temperature and ASTM C 1289.

Technical specifications as shown in this literature are intended to be used as general guidelines only. The physical and chemical properties of AP Foil-faced Polyisocyanurate Foam Sheathing listed herein represent typical, average values obtained in accordance with accepted test methods and are subject to normal manufacturing variations. They are supplied as a technical service and are subject to change without notice. Any references to numerical flame spread or smoke developed ratings are not intended to reflect hazards presented by these or any other materials under actual fire conditions. Check with the sales office nearest you for current information. All Johns Manville products are sold subject to Johns Manville's Limited Warranty and Limitation of Remedy. For a copy of the Johns Manville Limited Warranty and Limitation of Remedy or for information on other Johns Manville thermal and acoustical insulation and systems, call or write to the 800 number or address listed below.



Distributed by:

Building Insulation Division

717 17th Street (80202)
P.O. Box 5108
Denver, CO 80217-5108
1-800-654-3103
www.jm.com