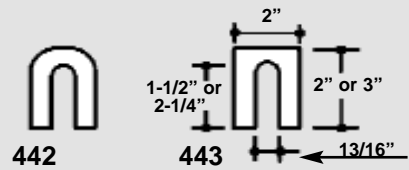
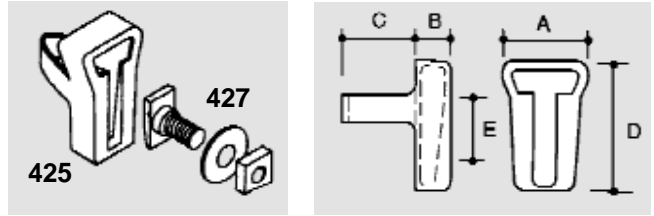


SHELF ANGLE (WEDGE) INSERTS

When cast into concrete, **Wedge Inserts** and **Askew Head Bolts** provide a secure and adjustable method for fastening shelf angles and other materials to concrete structures. The anchor's wedging action reduces slippage to a minimum. **Shelf Angle Inserts** allow vertical adjustment so veneers can be properly aligned despite construction tolerances in the building frame.

No. 425 Wedge Insert: These heavy-duty malleable iron inserts have three holes for nailing to forms. Anchor loops are designed to take 3/4" (19 mm) reinforcing bars or anchor rods for increased anchorage in concrete. Available plain or hot dip galvanized.

No. 427 Askew Head Bolts: The wedge-shaped heads of these steel bolts compliment the wedge-shaped inside face of the Wedge Insert. Available plain, electro-galvanized, or hot dip galvanized. Furnished with washers and nuts.



SHIMS

No. 442 Plastic Shims: High impact plastic shims with up to 4500 p.s.i. compressive strength. Available in 1/16" (1.59mm), 1/8" (3.17 mm), and 1/4" (6.35 mm) thicknesses. Specify bolt size.

No. 443 Steel Shims: Heckmann stocks steel shims in standard sizes, and custom fabricates them for special applications. Shims should be as long as the vertical legs of angles to prevent the angles from deflecting under load. 1/16" (1.59 mm), 1/8" (3.17 mm), and 1/4" (6.35 mm) thick shims are available in mill galvanized (1/8" max.), plain, hot dip galvanized, and stainless steel (1/8" max).

No. 425 Wedge Inserts

Bolt	Cat No.	A	B	C	D	E ⁽¹⁾
5/8	425-5	2-1/4"	1-1/32"	1-15/16"	3-5/8"	1-5/8"
15.9mm		57mm	26.2mm	49.2mm	92.1mm	41.3mm
3/4	425-6	2-5/16"	1-3/16"	2-1/2"	3-7/8"	1-3/4"
19mm		58.7mm	30.2mm	63.5mm	98.4mm	44.45mm
3/4	425-6L ⁽²⁾	2-1/4"	1-1/4"	2-3/8"	5-1/2"	3"
19mm		57mm	31.7mm	60.3mm	140mm	76.2mm

No. 427 Askew Head Bolts

Bolt	Cat No.	Available Lengths ⁽³⁾
5/8"	427-5	1-1/2", 2", 2-1/2", 3"
15.9mm		38.1mm, 50.8mm, 63.5mm, 76.2mm
3/4"	427-6	1-1/2", 2", 2-1/2", 3"
19mm		38.1mm, 50.8mm, 63.5mm, 76.2mm

1. "E" is length of vertical adjustment for Askew Head Bolts.
2. Long Inserts provide greater adjustability and can be placed near bottom of concrete beams. Anchor loops are 3-1/2" (89 mm) above bottom of insert and can be secured to bottom layer of beam reinforcing.
3. Bolt extends beyond face of Insert approx. 1/4" (6.3mm) less than specified length.

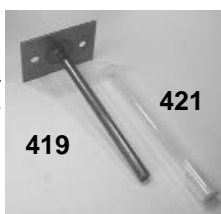
Call Heckmann for test data on Shelf Angle Inserts or visit our website www.heckmannbuildingprods.com.

MASONRY WALL STABILIZING ANCHORS

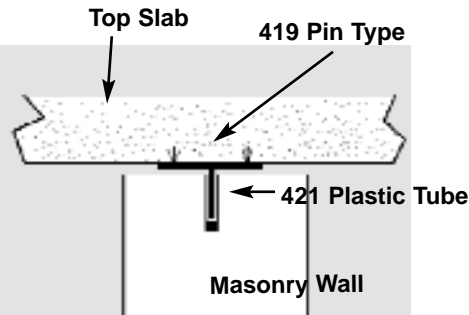
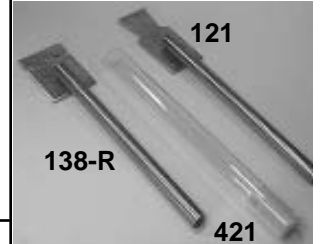
These anchors are used to resist lateral loads at the top of masonry walls. They allow vertical deflection of the slab above while compressive loads are not transferred to the masonry wall below. The rods are 3/8" diameter (10mm) x 6" (150 mm) long and the flat anchors are 12 gage. A plastic tube is embedded in the mortar to prevent the rod from bonding with the mortar. Available in Hotdip Galvanized or Stainless Steel.

No. 419 Pin Type:

Attach to existing concrete slab or weld to structural beam. Use with **No. 421 Plastic Tubes**.

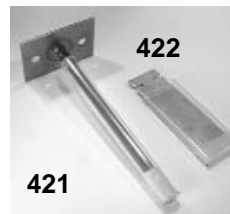


No. 420 Cap: Attach to existing top slab and slide CMU inside bends. Plastic tubes not required.



No. 421 Plastic Tube: For use with Rod Anchors extending into masonry wall. Compressible filler included.

No. 422 Plastic Rectangle Tube: For use with Flat Anchors extending into masonry wall. Foam filler included.



See Pgs 13-15 for Dovetail and Channel Slot products.